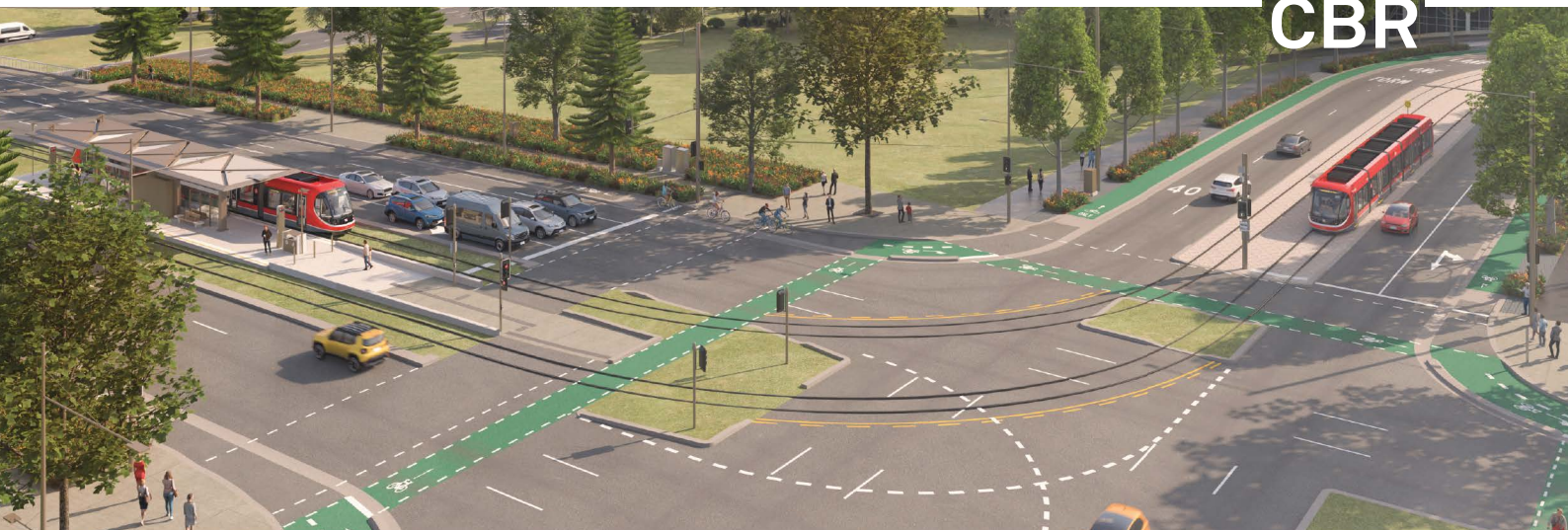


Light Rail to Woden Construction Update

Monthly Look Ahead for September 2024



**BUILT
FOR
CBR**



The ACT Government is building light rail to Woden to help make Canberra a more connected, sustainable, and vibrant city. This construction look ahead provides a summary of expected activity in the work zones for the month ahead on Raising London Circuit and Light Rail Stage 2A City to Commonwealth Park.

Main works in September

- > Night and weekend works continue for Light Rail Stage 2A to Commonwealth Park
- > Weekend work on London Circuit between Edinburgh Avenue and Gordon Street
- > Out of hours works continue throughout September at the intersection of London Circuit and Edinburgh Avenue
- > Landscaping, installation of streetlights and kerb and guttering finishing works on the Parkes Way off ramp

Early investigation works: Light Rail Stage 2A

City to Commonwealth Park

Investigation works are continuing as part of Stage 2A. These early investigations will help inform Canberra Metro's wider construction program planned to commence in 2025.

During September, Canberra Metro will continue surface and manhole inspections, potholing, and minor excavation to assess soil conditions and in-ground services along the Stage 2A route and in proposed site compound areas.

As part of the Stage 2A project, the electrical services at Swinden Street stop will be upgraded. To prepare for the upgrade works, site investigations will be conducted near the

Swinden Street light rail stop. These investigation works will not impact light rail services between Gungahlin and the City. Light Rail services will continue to operate according to the current timetable.

Canberra Metro will also continue investigation works south of the Commonwealth Avenue bridge to assist with future enabling works. There will be minimal impact on roads, access and pedestrians.

Traffic control will be in place where required to keep workers and the community safe.



Please note:

This notification is accurate at time of publishing, and that dates for road closures/works are subject to change. To stay up to date visit builtforcbr.act.gov.au/travel-impacts. Major Projects Canberra will send out notifications if there are any further updates.

Night and weekend work

London Circuit and Edinburgh Avenue

Between **6am Sunday 1 September and 7am Monday 30 September 2024** work will be undertaken at the intersection of London Circuit and Edinburgh Avenue, including on weekends and overnights. Works will include excavation for utilities, stormwater and sewer works, utilities installation, streetlight and traffic signalling works, pavement works and landscaping.

The QT Hotel remains open for business and entry to the QT Hotel will be available only via London Circuit and exit only via Marcus Clarke Street.

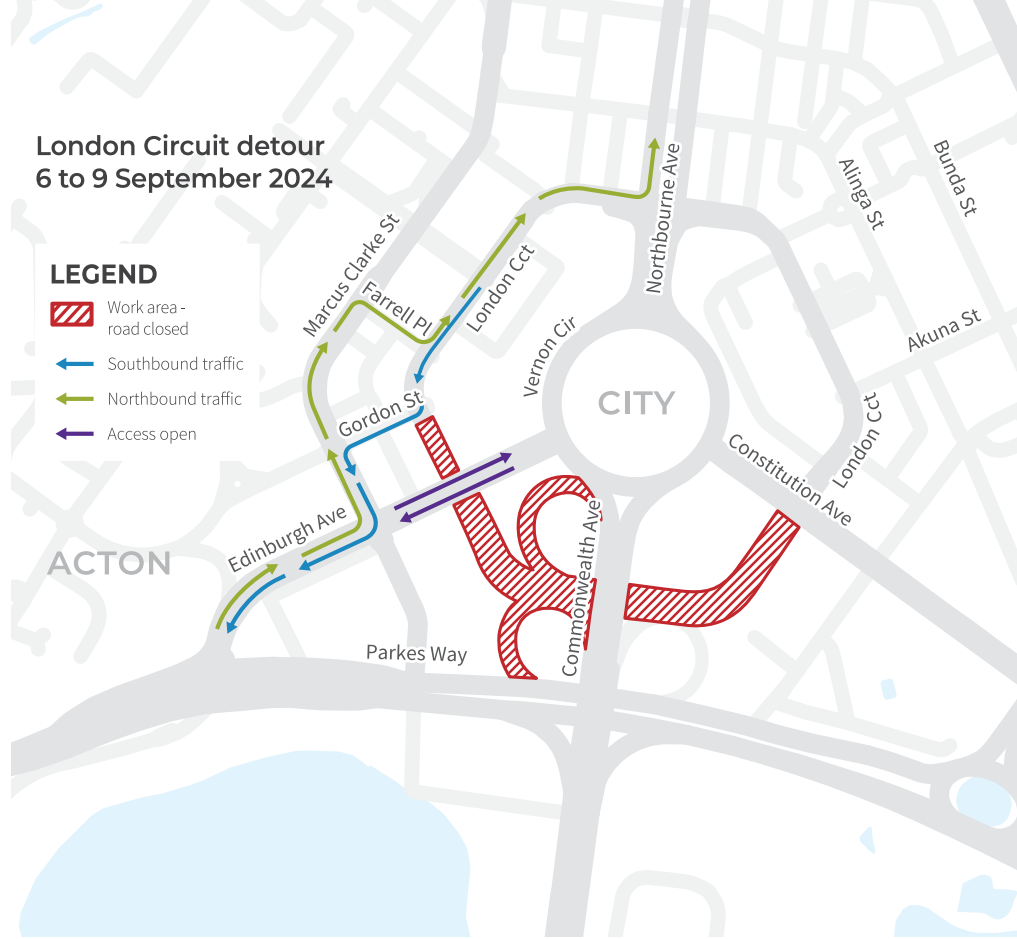
London Circuit

Between **9:30am Friday 6 September and 6am Monday 9 September** London Circuit will be closed between Edinburgh Avenue and Gordon Street. This closure will allow for stormwater works, saw cutting, excavation, compaction and pavement works to proceed safely in the area. Traffic detours will be in place. If works cannot be completed at this time, a contingency is planned from **9:30am Friday 13 September to 6am Monday 16 September**.

London Circuit detour 6 to 9 September 2024

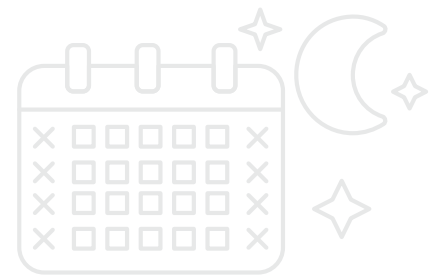
LEGEND

-  Work area - road closed
-  Southbound traffic
-  Northbound traffic
-  Access open



Commonwealth Avenue and London Circuit

During September, each Saturday between 6am and 6pm, works will be undertaken at the intersection of Commonwealth Avenue and London Circuit for fill placement and permanent utilities installations, including stormwater works.



Other works

Other night works may need to take place in September. Further construction notifications will be published on act.gov.au/lightrailtowoden to let you know when these works will take place.



Sign up for updates

Use this **QR code** to sign up and receive this look ahead and supplementary construction notifications direct to your inbox.

Please note, dates for road closures/works are subject to change, to stay up to date visit builtforcbr.act.gov.au/travel-impacts.



To speak to someone in a language other than English telephone the Telephone Interpreter Service (TIS) **13 14 50**. It operates 24 hours a day, seven days a week.

Contact Us

Produced by **Major Projects Canberra** | September 2024

@ lightrailtowoden@act.gov.au

act.gov.au/lightrailtowoden

1800 956 409